

Packaging Requirement For Impact Switch Springs

25Q065 PACKAGING REQUIREMENT FOR IMPACT SWITCH SPRINGS, REV - (4/2014)

IMPACT SWITCH SPRING PACKAGING REQUIREMENT

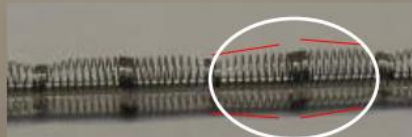
Conical Spring Geometry

- Place Small Cone Diameter to Small Cone Diameter



PACKAGING REQUIREMENT:

- Individual Spring Placement to eliminate nesting / entanglement
- Match Cone Diameters to eliminate nesting on Rod; refer to picture
- ~1/32" DIA Rod Wire
- Closed Rod Ends to insure Springs are maintained on the Rod Length



Conical Spring Geometry

- Place Large Cone Diameter to Large Cone Diameter

04/03/2014 09:59